



# LV Series

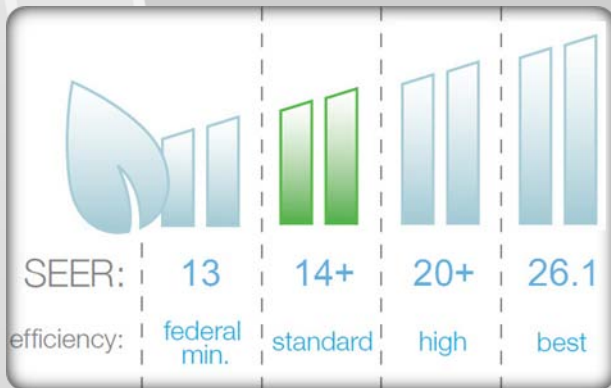


**SEER 15+ Concealed Built-in Heat Pump**

# EXPERTISE AND INNOVATION

Daikin's slim duct systems offer a built-in solution with the benefits of duct free technology. Installed similar to a traditional ducted system, these systems are concealed and slim in size and are ideal for add-ons and zoning control.

## ENERGY EFFICIENCY



Integrated with an inverter “variable speed” compressor, systems deliver the capacity required to maintain desired room conditions, typically reducing energy consumption by 30% compared to traditional fixed speed systems. This technology minimizes temperature fluctuations and provides continuous cooling and heating comfort with maximum energy savings.

## INDIVIDUAL COMFORT AND CONTROL

Individual temperature control provides comfort for the entire space. With effective cooling and heating coverage at quiet operating sounds, these systems combine superior comfort control with lifestyle convenience all at the touch of a button.



## BUILT-IN RELIABILITY



All major components are engineered and manufactured by Daikin, ensuring maximum performance, reliability and efficiency. From the internal motors and compressors to the exterior anti-corrosion treatment and self diagnostic function, Daikin systems are built with durability and backed by one of the best warranties in the industry.

# ADVANCED FEATURES THAT MAKE A DIFFERENCE

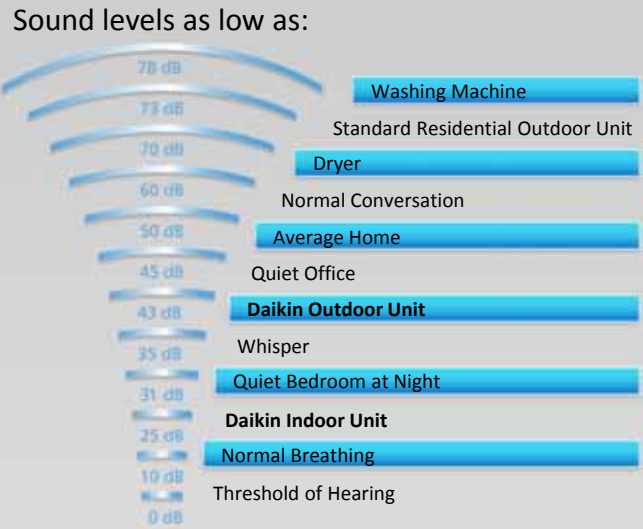
## See the Difference



Only 7-7/8" in height, Daikin's built-in solution offers a concealed design that blends seamlessly into any room decor. Compact with design flexibility, these units are easily installed and require minimal ductwork, allowing greater energy efficiency while maintaining cooling and heating comfort.

## Hear the Difference

Utilizing inverter technology to maintain comfort settings, Daikin systems most often operate at low speeds with indoor sound levels as low as 31 decibels (dB) and outdoor sound levels as low as 43 dB. Activate the indoor unit quiet operation and sound levels drop by 2-3 dB for gentler heating and cooling and operating sounds quieter than a whisper.



## Breathe the Difference

Including a washable, mold proof air filter as standard, this pre-filter is impregnated with a safe, colorless, and odorless mold preventative, rendering it virtually resistant to mold. Offering installation on the rear or bottom suction side of the unit for simple installation and access, the filter may be easily cleaned with a vacuum cleaner and cool water, providing cleaner air in a reusable, user-friendly device.

## FEATURES



Automatic Operation



Program Dry Function



Auto Fan Speed



Mold Proof Air Filter



Hot Start



Econo Mode



Outdoor Quiet Operation



Indoor Quiet Operation



Powerful Operation



LCD Wireless Remote



Remote Controller with Backlit Display



Auto Restart After Power Failure



Self Diagnosis with Digital Display



Anticorrosion Treatment



24 Hour On/Off Timer



Scan for Description of Features

# LEADING TECHNICAL PERFORMANCE

## LV Series Standard Efficiency System Performance

Indoor Model		FDXS09LVJU	FDXS12LVJU
Outdoor Model		RXS09LVJU	RXS12LVJU
Cooling Capacity (Rated)	Btu/h	8,500	11,500
Cooling Capacity (Min - Max)	Btu/h	4,400 - 8,500	4,800 - 11,500
Heating Capacity (Rated)	Btu/h	10,000	11,500
Heating Capacity (Min - Max)	Btu/h	4,400 - 10,000	4,800 - 11,500
SEER		15.1	15.5
COP		3.45	3.51
EER		11.2	9.1
HSPF		10.3	10.4
Power Supply		Single phase 60Hz 208/230V	
Minimum Circuit Amps	A	8.00	8.75
Maximum Overcurrent Protection	A	15.0	15.0
Power Consumption - Cooling	W	760	1,260
Power Consumption - Heating	W	850	960
Operating Current - Cooling	A	4.6 - 4.2	6.4 - 5.8
Operating Current - Heating	A	4.5 - 4.1	4.9 - 4.4

## Indoor Units - FDXS Slim Duct Built-in Concealed Ceiling Units

Model Name		FDXS09LVJU	FDXS12LVJU
Moisture Removal	gal/h	2.5	4.0
Airflow-Wet (H/M/L)	CFM	305/280/260/235	305/280/260/235
Airflow-Dry (H/M/L)	CFM	305/280/260/235	305/280/260/235
Sound Pressure - Cooling (H/M/L)	dB(A)	35/33/31	35/33/31
Sound Pressure - Heating (H/M/L)	dB(A)	35/33/31	35/33/31
Piping Connections	Liquid (O.D.)	in.	Ø 1/4
	Gas (O.D.)	in.	Ø 3/8
	Condensate Drain	in.	Ø 25/32
Dimensions (H x W x D)	in.	7-7/8 x 27-9/16 x 24-7/16	
Net Weight	lbs.	47.0	47.0

## Outdoor Units - RXS\_LVJU Heat Pump

Model Name		RXS09LVJU	RXS12LVJU
Sound Pressure Level - Cooling (H/L)	dB(A)	47/43	49/44
Sound Pressure Level - Heating (H/L)	dB(A)	48/44	49/45
Operating Range - Cooling	°F DB	14 - 115	14 - 115
Operating Range - Cooling with Optional Wind Baffle	°F DB	0 - 115	0 - 115
Operating Range - Heating	°F DB	5 - 77	5 - 77
Max. Piping Length	ft.	65.6	65.6
Max. Piping Height	ft.	49.2	49.2
Dimensions (H x W x D)	in.	21-5/8 x 30-1/8 x 11-1/4	
Net Weight	lbs.	75.0	75.0

## Options

## Part Number

<b>Indoor Unit</b>	
Wired Controller	BRC944B2
Condensate Pump	DACA-CP1-1
<b>Outdoor Unit</b>	
Mounting Bracket	DACA-WB-3
Air Adjustment Grille (09/12 MBH)	KPW937C4



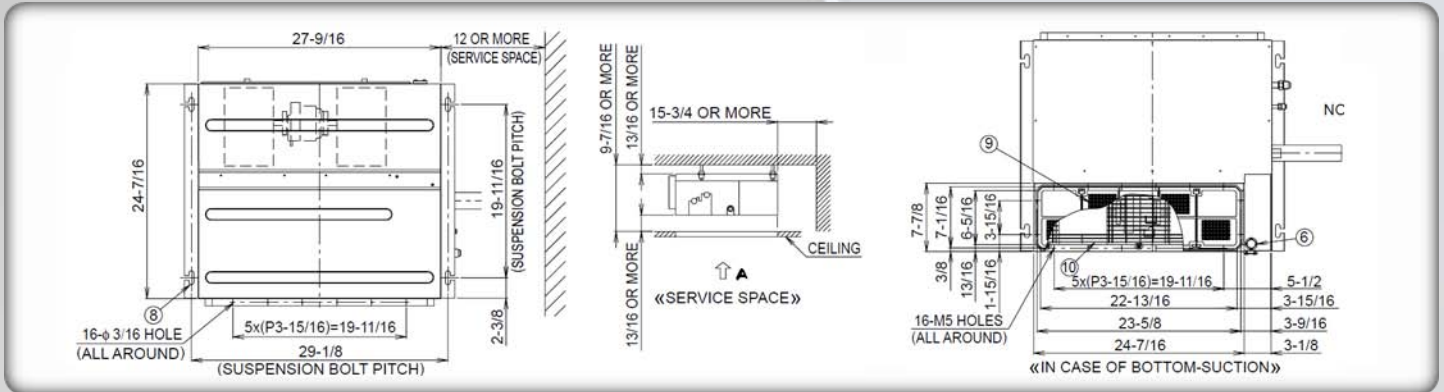
# TIME-SAVING INSTALLATION AND EASE

Connected by a pair of refrigerant lines, few electrical connections, and little to no ductwork, indoor and outdoor units can be easily installed in existing spaces with minor disruption and often in a single day's work. The compact and lightweight designs combined with flexible piping and minimal wiring allow installation with minimal time and costs.

## For FDXS09/12LVJU

Space required for installation (in.)

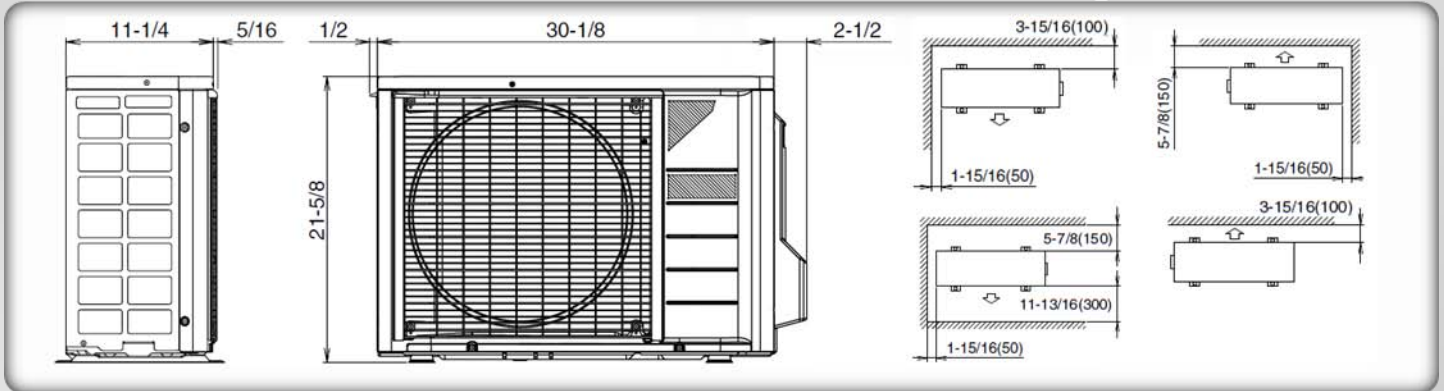
Wall height on air outlet side = Less than 47-1/4"



## For RXS09/12LVJU

Space required for installation (in.)

Wall height on air outlet side = Less than 47-1/4"



## WARNINGS:

- Always use a licensed installer or contractor to install this product. Do not try to install the product yourself. Improper installation can result in water or refrigerant leakage, electrical shock, fire or explosion.
- Use only those parts and accessories supplied or specified by Daikin. Ask a licensed contractor to install those parts and accessories. Use of unauthorized parts and accessories or improper installation of parts and accessories can result in water or refrigerant leakage, electrical shock, fire or explosion.
- Read the User's Manual carefully before using this product. The User's Manual provides important safety instructions and warnings. Be sure to follow these instructions and warnings.

For any inquiries, contact your local Daikin sales office.



Use of the AHRI Certified™ mark indicates a manufacturer's participation in the certification program. For verification of certification for individual products, go to [www.ahridirectory.org](http://www.ahridirectory.org)



Organization:  
DAIKIN INDUSTRIES, LTD.  
AIR CONDITIONING MANUFACTURING DIVISION  
Scope of Registration:  
THE DESIGN/DEVELOPMENT AND MANUFACTURE OF COMMERCIAL AIR CONDITIONING, HEATING, COOLING, REFRIGERATING EQUIPMENT, COMMERCIAL HEATING EQUIPMENT, RESIDENTIAL AIR CONDITIONING EQUIPMENT, HEAT RECLAIM VENTILATION, AIR CLEANING EQUIPMENT, MARINE TYPE CONTAINER REFRIGERATION UNITS, COMPRESSORS AND VALVES.



Organization:  
DAIKIN INDUSTRIES (THAILAND) LTD.  
Scope of Registration:  
THE DESIGN/DEVELOPMENT AND MANUFACTURE OF AIR CONDITIONERS AND THE COMPONENTS INCLUDING COMPRESSORS USED FOR THEM.



All of the Daikin Group's business facilities and subsidiaries in Japan are certified under the ISO 14001 International standard for environmental management.

© 2012 Daikin Industries, Limited.

Daikin, Daikin AC Absolute Comfort, and its design, VRV, REFNET, Quaternity, Daikin Altherma are trademarks of Daikin Industries, LTD.

[www.daikindifference.com](http://www.daikindifference.com)

Distributor or Dealer Information:

Daikin AC (Americas), Inc.  
1645 Wallace Drive, Suite 110  
Carrollton, TX 75006  
[www.daikinac.com](http://www.daikinac.com)  
866.4DAIKIN  
972.245.1510

CCFSDUSE12-05R

For all equipment installation & application limitations please refer to the specific Engineering Data Books. Daikin's products are subject to continuous improvements. Daikin reserves the right to modify product design, specifications and information in this brochure without notice and without incurring any obligations.